

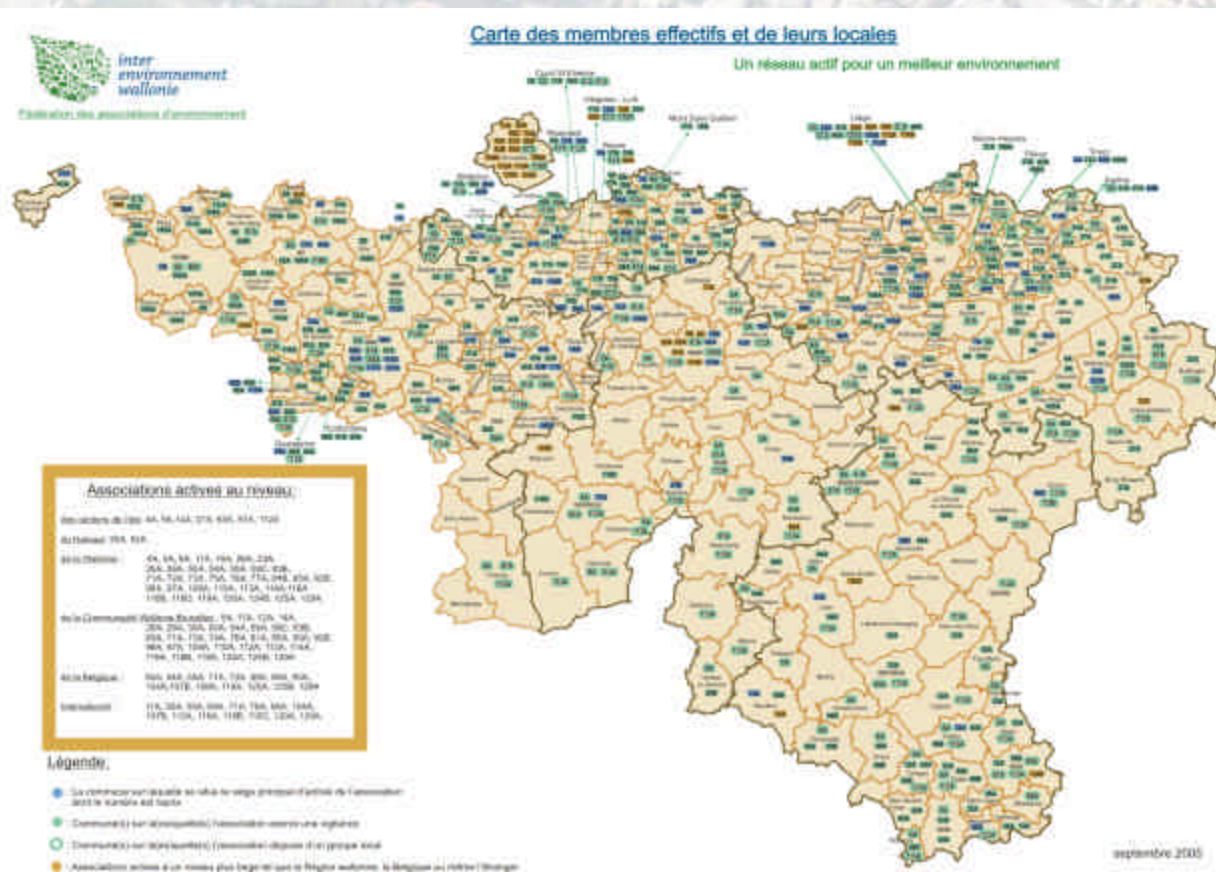
***Inter-Environnement Wallonie (IEW):
challenges of a federation defined as a tool
to incorporate sustainability concerns into
the political decision process.***

Sophie Dawance, Belgium



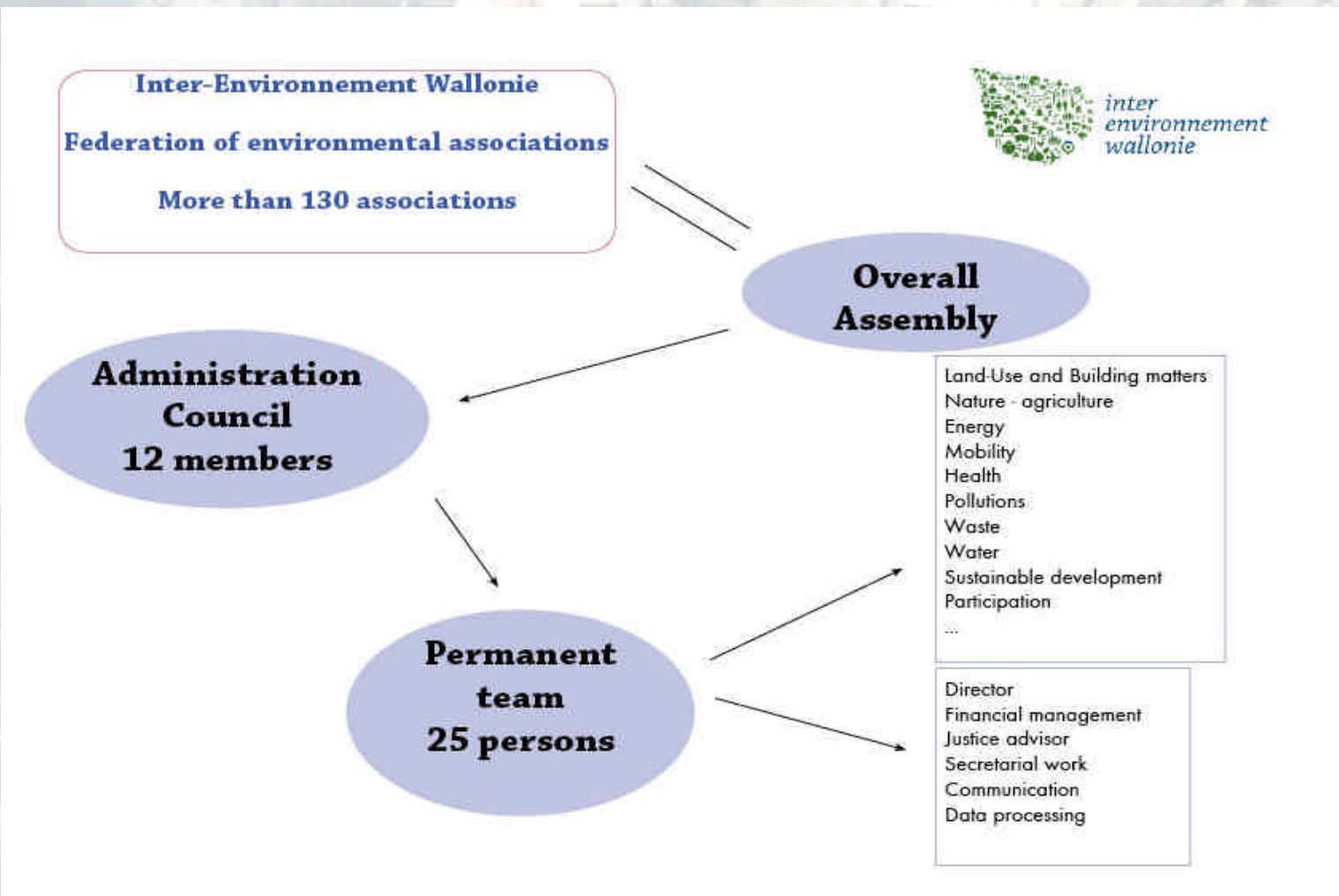
IEW, quick presentation of the federation

- Non-profit organisation mostly funded by public authorities
- Has federated around 130 associations for more than 30 years



IEW, quick presentation of the federation

■ Structure of the federation



IEW's role

- IEW is a tool defined by regional public authorities to concretely integrate **sustainable concerns** into development.
- The federation plays a role of **bottom-up** relay coupled with an **up-down** clarification approach.

Bottom-up relay

■ Means of action

- Delegates in various following-up committees of decision (ex: CRAT)
- Position papers to decision-makers
- Public enquiries
- Media pressure
- Justice

Up-down clarification approach.

■ Means of action

- Training and formations
- Brainstorming, workshops and conferences
- Publications and information papers
- Papers in media
- More occasionally larger public campaign on specific themes
- Information to punctual questions (phone, e-mails,...)

IEW, specificities and challenges

IEW is a tool created by the government to help it in sustainable challenges but the federation is financed by the authorities themselves...

Freedom of thinking, criticizing, acting!

Examples of means of action

Land-use, urban-planning and building

- Shopping centre CORA in Mouscron
- Wind-farm energy and land-use policy
- Deviation and non-respect of the land-use
- City centres economical activities

Shopping centre CORA in Mouscron

When position taken at prior stage is denied in the final decision, more extreme means such as appeal to Court have to be used.





*inter
environnement
wallonie*





Wind-farm energy and land-use policy

An example of brainstorming and workshop that enable an enlarged vision of thematic problems



Deviation and non-respect of the land-use

Permanent following-up of public policies and the way they are put into practice.



Deviation and non-respect of the land-use

Permanent following-up of public policies and the way they are put into practice.





City centres economical activities

Thematic brainstorming, concrete propositions and organisation of a conference

